

# The GH-Method

---

## **Viscoelastic and Viscoplastic Glucose Theory (VGT #23): Applying the Concepts of Viscoelasticity, Viscoplasticity and Perturbation Theories to Investigate the Role and Impact of Oximetry Biomarker Value (Finger O<sub>2</sub>%) on Other Collected Biomarker Values Using Collected O<sub>2</sub>% Data Over a Relative Shorter Period of 6 Months Only from 8/8/2021 to 2/10/2022 Based on the GH-Method: Math-Physical Medicine (No. 602)**

**Gerald C. Hsu\***

eclairMD Foundation, USA

**Note:** Readers who want to get a quick overview can read the abstract, results, and graphs.

### **Abstract**

The author applies theories of viscoelasticity and viscoplasticity from engineering and perturbation theory from quantum mechanics to conduct biomedical research. He utilizes the output biomarkers of finger oxygen (O<sub>2</sub>% as the symptom) resulting from one of the suspected or identified input biomarkers scores for his sleep quality (as the cause), as well as the output biomarkers for fasting plasma glucose or FPG (as the symptom) resulting from the input biomarkers for finger O<sub>2</sub>% level (as the cause). He then applies the viscoelastic or viscoplastic glucose theory (VGT) to construct a stress-strain diagram to verify the existing viscoplastic time-dependency characteristics for the input biomarker and output biomarker. Finally, he utilizes the visco-perturbation model to predict his finger O<sub>2</sub>% and FPG level to compare against the collected data. Out of curiosity, he further calculates various correlation coefficients between his finger O<sub>2</sub>% versus other biomarkers, such as body weight, body temperature, estimated average glucose (eAG), FPG, postprandial plasma glucose (PPG), blood pressure, HbA1C, sleep hours, and sleep quality scores. During the COVID-19 pandemic period, due to concerns of contracting viral infection and impact on his respiratory system, he began to measure his daily body temperature starting on 10/1/2020 and daily finger O<sub>2</sub>% on 8/8/2021. In order to compare biomarkers moving trends, he decided to utilize the 90-days moving average method. He omits the first 90-days period in the result diagrams even though the influences are still included in the 90-days moving average data and charts. As a result, the data size of collected finger O<sub>2</sub>% is limited to a 6-months

period within a 3-months diagram. Therefore, the findings outlined in this article are only “preliminary findings”. In the future, after collecting a longer period of his finger O<sub>2</sub>% data, he will revisit and re-verify this research subject to draw additional conclusions. The following two generalized equations from viscoelasticity or viscoplasticity are utilized to study the stress-strain relationship in his cases. Here, he wants to use the strain rate multiplied with the viscosity factor as the stress: Strain =  $\epsilon$  = individual output biomarker value at present time. Stress =  $\sigma = \eta * (d\epsilon/dt) = \eta * (d\text{-strain}/d\text{-time}) = (\text{viscosity factor } \eta) * ((\text{output biomarker at present time} - \text{output biomarker at previous time}) / (\text{time duration} = 1))$ , where the time duration of 1 was chosen due to his data being taken daily. To offer a simple explanation to readers who do not have a physics or engineering background, the author includes a brief excerpt from Wikipedia regarding the description of basic concepts for elasticity and plasticity theories, viscoelasticity and viscoplasticity theories from the disciplines of engineering and physics, along with perturbation theory of quantum mechanics in the method section. In summary, the following three observations outline the findings from this research work. (1) His collected finger O<sub>2</sub>% data over the past 6+ months has a distribution profile described as follows: O<sub>2</sub> 96% level occupies 48% of total data while O<sub>2</sub> 94%-98% level occupies 99% of total data. In other words, his oximetry biomarker readings are healthy and normal. (2) His finger O<sub>2</sub>% versus other biomarkers have the following nine high correlation coefficients (all within 63% to 91% or -68% to -96%): weight = 79%, HbA1C = 63%,

---

Received: 17 February 2022, Accepted: 03 March 2022, Available online: 10 March 2022

\*Corresponding author: Gerald C. Hsu, eclairMD Foundation, USA

blood pressure = 67%, eAG = 82%, FPG = 80%, PPG = 79%, sleep hours = 91%, sleep scores = 96%, body temperature = 68%. (3) His correlation coefficients and prediction accuracies between measured dataset and predicted dataset are listed: Finger O<sub>2</sub> using sleep score as input: Correlation = 99.5%, Accuracy = 100%; FPG using finger O<sub>2</sub> as input: Correlation = 78%, Accuracy = 99.9%. In conclusion, his finger O<sub>2</sub> has high correlations

(63%-91% or 68% - 96%) with other 9 selected biomarkers. When he compares his two predicted cases (O<sub>2</sub> from sleep score and FPG from O<sub>2</sub>), he has achieved high correlations (78% to 99.5%) and extremely high prediction accuracies (99.9% - 100%). Therefore, from the math-physical viewpoint, a preliminary conclusion can be drawn that the finger O<sub>2</sub> is an important biomarker.

**Keywords:** Viscoelasticity; Viscoplasticity; Glucose; Biomarker; Finger oxygen

**Abbreviations:** O<sub>2</sub>: finger oxygen; T2D: type 2 diabetes; PPG: postprandial plasma glucose; FPG: fasting plasma glucose; MPM: math-physical medicine

## 1. INTRODUCTION

The author applies theories of viscoelasticity and viscoplasticity from engineering and perturbation theory from quantum mechanics to conduct biomedical research. He utilizes the output biomarkers of finger oxygen (O<sub>2</sub>% as the symptom) resulting from one of the suspected or identified input biomarkers scores for his sleep quality (as the cause), as well as the output biomarkers for fasting plasma glucose or FPG (as the symptom) resulting from the input biomarkers for finger O<sub>2</sub>% level (as the cause).

He then applies the viscoelastic or viscoplastic glucose theory (VGT) to construct a stress-strain diagram to verify the existing viscoplastic time-dependency characteristics for the input biomarker and output biomarker. Finally, he utilizes the visco-perturbation model to predict his finger O<sub>2</sub>% and FPG level to compare against the collected data. Out of curiosity, he further calculates various correlation coefficients between his finger O<sub>2</sub>% versus other biomarkers, such as body weight, body temperature, estimated average glucose (eAG), FPG, postprandial plasma glucose (PPG), blood pressure, HbA1C, sleep hours, and sleep quality scores.

During the COVID-19 pandemic period, due to concerns of contracting viral infection and impact on his respiratory system, he began to measure his daily body temperature starting on 10/1/2020 and daily finger O<sub>2</sub>% on 8/8/2021. In order to compare biomarkers moving trends, he decided to utilize the 90-days moving average method. He omits the first 90-days period in the result diagrams even though the influences are still included in the 90-days moving average data and charts. As a result, the data size of collected finger O<sub>2</sub>% is limited to a 6-months period within a 3-months diagram. Therefore, the findings outlined in this article are only “preliminary findings”. In the future, after collecting a longer period of his finger O<sub>2</sub>% data, he will revisit and re-verify this research subject to draw additional conclusions.

The following two generalized equations from viscoelasticity or viscoplasticity are utilized

to study the stress-strain relationship in his cases. Here, he wants to use the strain rate multiplied with the viscosity factor as the stress:

Strain  
 $= \epsilon$   
 $=$  individual output biomarker value at present time

Stress  
 $= \sigma$   
 $= \eta * (d\epsilon/dt)$   
 $= \eta * (d\text{-strain}/d\text{-time})$   
 $= (\text{viscosity factor } \eta) * ((\text{output biomarker at present time} - \text{output biomarker at previous time}) / (\text{time duration} = 1))$

Where the time duration of 1 was chosen due to his data being taken daily.

To offer a simple explanation to readers who do not have a physics or engineering background, the author includes a brief excerpt from Wikipedia regarding the description of basic concepts for elasticity and plasticity theories, viscoelasticity and viscoplasticity theories from the disciplines of engineering and physics, along with perturbation theory of quantum mechanics in the method section.

## 2. METHODS

### 2.1 Brief introduction of math-physical medicine (MPM) research

The author has collected ~3 million data regarding his health condition and lifestyle details over the past 12 years. He spent the entire year of 2014 to develop a metabolism index (MI) model using topology concept, nonlinear algebra, algebraic geometry, and finite element method. This model contains various measured biomarkers and recorded lifestyle details along with their induced new biomedical variables for an additional ~1.5 million data. Detailed data of his body weight, glucose, blood pressure, heart rate, blood lipids, body temperature, and blood oxygen level, along with important lifestyle details, including diet, exercise, sleep, stress, water intake, and daily life routines are included in his MI database. In addition, this lifestyle details also include some lifetime bad habits and environmental exposures. Fortunately, the author does not have any

unhealthy habits and has minimal exposure to the environmental factors. His developed MI model has a total of 10 categories covering approximately 500 detailed elements that constitute his defined “metabolism model” which are the building blocks or root causes for diabetes and other chronic disease complications, including but not limited to cardiovascular disease (CVD), chronic heart disease (CHD), stroke, chronic kidney disease (CKD), retinopathy, neuropathy, foot ulcer, and hypothyroidism. The end result of the MI development work is a combined MI value within any selected time period with 73.5% as its dividing line between a healthy and unhealthy state. The MI serves as the foundation to many of his follow-up medical research work.

During the period from 2015 to 2017, he focused his research on type 2 diabetes (T2D), especially glucoses, including fasting plasma glucose (FPG), postprandial plasma glucose (PPG), estimated average glucose (eAG), and hemoglobin A1C (HbA1C). During the following period from 2018 to 2022, he concentrated on researching medical complications resulting from diabetes, chronic diseases, and metabolic disorders which include heart problems, stroke, kidney problems, retinopathy, neuropathy, foot ulcer, diabetic skin fungal infection, hypothyroidism, and diabetic constipation, cancer, and dementia. He also developed a few mathematical risk models to calculate the probability percentages of developing various diabetic complications.

From his previous medical research work, he has identified and learned that the associated energy of hyperglycemic conditions is the primary source of causing many diabetic complications which lead to death. Therefore, a thorough knowledge of these energies is important for achieving a better understanding of those dangerous complications.

## **2.2 Elasticity, plasticity, viscoelasticity and viscoplasticity**

The difference between elastic materials and viscoelastic materials (from “Soborthans, innovating shock and vibration solutions”).

What are elastic materials?

Elasticity is the tendency of solid materials to return to their original shape after forces are applied on them. When the forces are removed, the object will return to its initial shape and size if the material is elastic.

What are viscous materials?

Viscosity is a measure of a fluid’s resistance to flow. A fluid with large viscosity resists motion. A fluid with low viscosity flows. For example, water flows more easily than syrup because it has a lower viscosity. High viscosity materials might include honey, syrups, or gels – generally things that resist flow. Water is a low viscosity material, as it flows readily. Viscous materials are thick or sticky or adhesive. Since heating reduces viscosity, these materials don’t flow easily. For example, warm syrup flows more easily than cold.

What is viscoelastic?

Viscoelasticity is the property of materials that exhibit both viscous and elastic characteristics when undergoing deformation. Synthetic polymers, wood, and human tissue, as well as metals at high temperature, display significant viscoelastic effects. In some applications, even a small viscoelastic response can be significant.

Elastic behavior versus viscoelastic behavior

The difference between elastic materials and viscoelastic materials is that viscoelastic materials have a viscosity factor and the elastic ones don’t. Because viscoelastic materials have the viscosity factor, they have a strain rate dependent on time. Purely elastic materials do not dissipate energy (heat) when a load is applied, then removed; however, a viscoelastic substance does.

The following brief introductions are excerpts from Wikipedia:

“Elasticity (physics):

Physical property when materials or objects return to original shape after deformation.

In physics and materials science, elasticity is the ability of a body to resist a distorting influence and to return to its original size and

shape when that influence or force is removed. Solid objects will deform when adequate loads are applied to them; if the material is elastic, the object will return to its initial shape and size after removal. This is in contrast to plasticity, in which the object fails to do so and instead remains in its deformed state.

The physical reasons for elastic behavior can be quite different for different materials. In metals, the atomic lattice changes size and shape when forces are applied (energy is added to the system). When forces are removed, the lattice goes back to the original lower energy state. For rubbers and other polymers, elasticity is caused by the stretching of polymer chains when forces are applied.

Hooke's law states that the force required to deform elastic objects should be directly proportional to the distance of deformation, regardless of how large that distance becomes. This is known as perfect elasticity, in which a given object will return to its original shape no matter how strongly it is deformed. This is an ideal concept only; most materials which possess elasticity in practice remain purely elastic only up to very small deformations, after which plastic (permanent) deformation occurs.

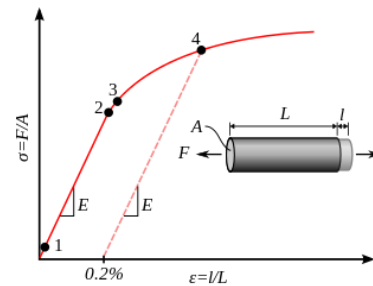
In engineering, the elasticity of a material is quantified by the elastic modulus such as the Young's modulus, bulk modulus or shear modulus which measure the amount of stress needed to achieve a unit of strain; a higher modulus indicates that the material is harder to deform. The material's elastic limit or yield strength is the maximum stress that can arise before the onset of plastic deformation.

Plasticity (physics):

Deformation of a solid material undergoing non-reversible changes of shape in response to applied forces.

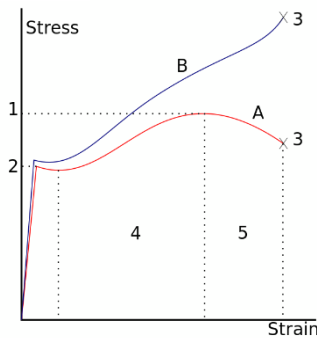
In physics and materials science, plasticity, also known as plastic deformation, is the ability of a solid material to undergo permanent deformation, a non-reversible change of shape in response to applied forces. For example, a solid piece of metal being bent or pounded into a new shape displays plasticity as permanent changes occur within the material itself. In engineering, the

transition from elastic behavior to plastic behavior is known as yielding.



Stress–strain curve showing typical yield behavior for nonferrous alloys.

1. True elastic limit
2. Proportionality limit
3. Elastic limit
4. Offset yield strength



A stress–strain curve typical of structural steel.

- 1: Ultimate strength
- 2: Yield strength (yield point)
- 3: Rupture
- 4: Strain hardening region
- 5: Necking region
- A: Apparent stress ( $F/A_0$ )
- B: Actual stress ( $F/A$ )

Plastic deformation is observed in most materials, particularly metals, soils, rocks, concrete, and foams. However, the physical mechanisms that cause plastic deformation can vary widely. At a crystalline scale, plasticity in metals is usually a consequence of dislocations. Such defects are relatively rare in most crystalline materials, but are numerous in some and part of their crystal structure; in such cases, plastic crystallinity can result. In brittle materials such as rock, concrete and bone, plasticity is caused predominantly by slip at microcracks. In cellular materials such as liquid foams or biological tissues, plasticity is mainly a

consequence of bubble or cell rearrangements, notably T1 processes.

For many ductile metals, tensile loading applied to a sample will cause it to behave in an elastic manner. Each increment of load is accompanied by a proportional increment in extension. When the load is removed, the piece returns to its original size. However, once the load exceeds a threshold – the yield strength – the extension increases more rapidly than in the elastic region; now when the load is removed, some degree of extension will remain.

Elastic deformation, however, is an approximation and its quality depends on the time frame considered and loading speed. If, as indicated in the graph opposite, the deformation includes elastic deformation, it is also often referred to as "elasto-plastic deformation" or "elastic-plastic deformation".

Perfect plasticity is a property of materials to undergo irreversible deformation without any increase in stresses or loads. Plastic materials that have been hardened by prior deformation, such as cold forming, may need increasingly higher stresses to deform further. Generally, plastic deformation is also dependent on the deformation speed, i.e. higher stresses usually have to be applied to increase the rate of deformation. Such materials are said to deform viscoplastically.”

Viscoelasticity:

Property of materials with both viscous and elastic characteristics under deformation.

In materials science and continuum mechanics, viscoelasticity is the property of materials that exhibit both viscous and elastic characteristics when undergoing deformation. Viscous materials, like water, resist shear flow and strain linearly with time when a stress is applied. Elastic materials strain when stretched and immediately return to their original state once the stress is removed.

Viscoelastic materials have elements of both of these properties and, as such, exhibit time-dependent strain. Whereas elasticity is usually the result of bond stretching along crystallographic planes in an ordered solid,

viscosity is the result of the diffusion of atoms or molecules inside an amorphous material.

In the nineteenth century, physicists such as Maxwell, Boltzmann, and Kelvin researched and experimented with creep and recovery of glasses, metals, and rubbers. Viscoelasticity was further examined in the late twentieth century when synthetic polymers were engineered and used in a variety of applications. Viscoelasticity calculations depend heavily on the viscosity variable,  $\eta$ . The inverse of  $\eta$  is also known as fluidity,  $\phi$ . The value of either can be derived as a function of temperature or as a given value (i.e. for a dashpot).

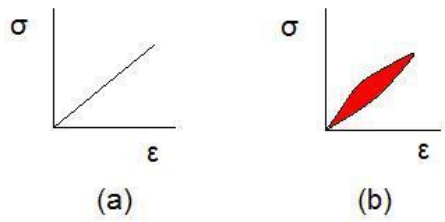
Depending on the change of strain rate versus stress inside a material, the viscosity can be categorized as having a linear, non-linear, or plastic response. When a material exhibits a linear response, it is categorized as a Newtonian material. In this case the stress is linearly proportional to the strain rate. If the material exhibits a non-linear response to the strain rate, it is categorized as non-Newtonian fluid. There is also an interesting case where the viscosity decreases as the shear/strain rate remains constant. A material which exhibits this type of behavior is known as thixotropic. In addition, when the stress is independent of this strain rate, the material exhibits plastic deformation. Many viscoelastic materials exhibit rubber-like behavior explained by the thermodynamic theory of polymer elasticity.

Cracking occurs when the strain is applied quickly and outside of the elastic limit. Ligaments and tendons are viscoelastic, so the extent of the potential damage to them depends both on the rate of the change of their length as well as on the force applied.

A viscoelastic material has the following properties:

- hysteresis is seen in the stress–strain curve
- stress relaxation occurs: step constant strain causes decreasing stress
- creep occurs: step constant stress causes increasing strain
- its stiffness depends on the strain rate or the stress rate.

Elastic versus viscoelastic behavior



Stress–strain curves for a purely elastic material (a) and a viscoelastic material (b). The red area is a hysteresis loop and shows the amount of energy lost (as heat) in a loading and unloading cycle. It is equal to

$$\oint \sigma d\epsilon$$

where  $\sigma$  is stress and  $\epsilon$  is strain.

Unlike purely elastic substances, a viscoelastic substance has an elastic component and a viscous component. The viscosity of a viscoelastic substance gives the substance a strain rate dependence on time. Purely elastic materials do not dissipate energy (heat) when a load is applied, then removed. However, a viscoelastic substance dissipates energy when a load is applied, then removed. Hysteresis is observed in the stress–strain curve, with the area of the loop being equal to the energy lost during the loading cycle. Since viscosity is the resistance to thermally activated plastic deformation, a viscous material will lose energy through a loading cycle. Plastic deformation results in lost energy, which is uncharacteristic of a purely elastic material's reaction to a loading cycle.

Specifically, viscoelasticity is a molecular rearrangement. When a stress is applied to a viscoelastic material such as a polymer, parts of the long polymer chain change positions. This movement or rearrangement is called “creep”. Polymers remain a solid material even when these parts of their chains are rearranging in order to accompany the stress, and as this occurs, it creates a back stress in the material. When the back stress is the same magnitude as the applied stress, the material no longer creeps. When the original stress is taken away, the accumulated back stresses will cause the polymer to return to its original form. The material creeps, which gives the prefix visco-, and the material fully recovers, which gives the suffix -elasticity.

Viscoplasticity:

Viscoplasticity is a theory in continuum mechanics that describes the rate-dependent inelastic behavior of solids. Rate-dependence in this context means that the deformation of the material depends on the rate at which loads are applied. The inelastic behavior that is the subject of viscoplasticity is plastic deformation which means that the material undergoes unrecoverable deformations when a load level is reached. Rate-dependent plasticity is important for transient plasticity calculations. The main difference between rate-independent plastic and viscoplastic material models is that the latter exhibit not only permanent deformations after the application of loads but continue to undergo a creep flow as a function of time under the influence of the applied load.

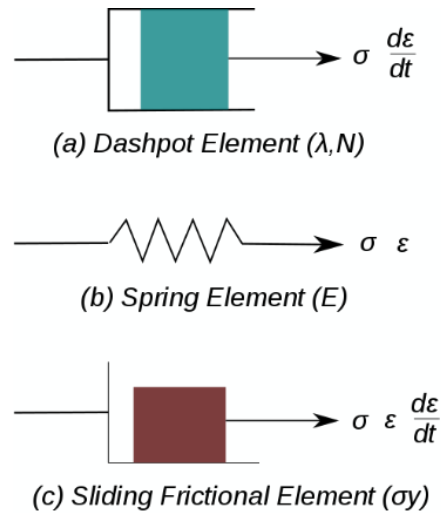


Figure 1. Elements used in one-dimensional models of viscoplastic materials.

The elastic response of viscoplastic materials can be represented in one-dimension by Hookean spring elements. Rate-dependence can be represented by nonlinear dashpot elements in a manner similar to viscoelasticity. Plasticity can be accounted for by adding sliding frictional elements as shown in Figure 1. In the figure  $E$  is the modulus of elasticity,  $\lambda$  is the viscosity parameter and  $N$  is a power-law type parameter that represents non-linear dashpot [ $\sigma(d\epsilon/dt) = \lambda(d\epsilon/dt)^{1/N}$ ]. The sliding element can have a yield stress ( $\sigma_y$ ) that is strain rate dependent, or even constant, as shown in Figure 1c.

Viscoplasticity is usually modeled in three-dimensions using overstress models of the

Perzyna or Duvaut-Lions types. In these models, the stress is allowed to increase beyond the rate-independent yield surface upon application of a load and then allowed to relax back to the yield surface over time. The yield surface is usually assumed not to be rate-dependent in such models. An alternative approach is to add a strain rate dependence to the yield stress and use the techniques of rate independent plasticity to calculate the response of a material.

For metals and alloys, viscoplasticity is the macroscopic behavior caused by a mechanism linked to the movement of dislocations in grains, with superposed effects of inter-crystalline gliding. The mechanism usually becomes dominant at temperatures greater than approximately one third of the absolute melting temperature. However, certain alloys exhibit viscoplasticity at room temperature (300K). For polymers, wood, and bitumen, the theory of viscoplasticity is required to describe behavior beyond the limit of elasticity or viscoelasticity.

In general, viscoplasticity theories are useful in areas such as

- the calculation of permanent deformations,
- the prediction of the plastic collapse of structures,
- the investigation of stability,
- crash simulations,
- systems exposed to high temperatures such as turbines in engines, e.g. a power plant,
- dynamic problems and systems exposed to high strain rates.

#### Phenomenology

For a qualitative analysis, several characteristic tests are performed to describe the phenomenology of viscoplastic materials. Some examples of these tests are

1. hardening tests at constant stress or strain rate,
2. creep tests at constant force, and
3. stress relaxation at constant elongation.

#### Strain hardening test

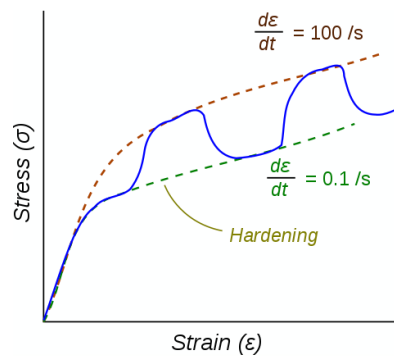


Figure 2. Stress–strain response of a viscoplastic material at different strain rates.

The dotted lines show the response if the strain-rate is held constant. The blue line shows the response when the strain rate is changed suddenly.

One consequence of yielding is that as plastic deformation proceeds, an increase in stress is required to produce additional strain. This phenomenon is known as Strain/Work hardening. For a viscoplastic material the hardening curves are not significantly different from those of rate-independent plastic material. Nevertheless, three essential differences can be observed.

1. At the same strain, the higher the rate of strain the higher the stress.
2. A change in the rate of strain during the test results in an immediate change in the stress–strain curve.
3. The concept of a plastic yield limit is no longer strictly applicable.

The hypothesis of partitioning the strains by decoupling the elastic and plastic parts is still applicable where the strains are small, i.e.,

$$\varepsilon = \varepsilon_e + \varepsilon_{vp}$$

where  $\varepsilon_e$  is the elastic strain and  $\varepsilon_{vp}$  is the viscoplastic strain.

To obtain the stress–strain behavior shown in blue in the figure, the material is initially loaded at a strain rate of 0.1/s. The strain rate is then instantaneously raised to 100/s and held constant at that value for some time. At the end of that time period the strain rate is dropped instantaneously back to 0.1/s and the cycle is continued for increasing values of strain. There is clearly a lag between the strain-rate change and the stress response.



This lag is modeled quite accurately by overstress models (such as the Perzyna model) but not by models of rate-independent plasticity that have a rate-dependent yield stress.

Perturbation theory

This article is about perturbation theory as a general mathematical method. In mathematics and applied mathematics, perturbation theory comprises methods for finding an approximate solution to a problem, by starting from the exact solution of a related, simpler problem. A critical feature of the technique is a middle step that breaks the problem into "solvable" and "perturbative" parts. In perturbation theory, the solution is expressed as a power series in a small parameter  $\epsilon$ . The first term is the known solution to the solvable problem. Successive terms in the series at higher powers of  $\epsilon$  usually become smaller. An approximate 'perturbation solution' is obtained by truncating the series, usually by keeping only the first two terms, the solution to the known problem and the 'first order' perturbation correction."

3. RESULTS

Figure 1 displays a table of ranges for SpO<sub>2</sub>%, pulse rate, and body temperature. It also includes the SpO<sub>2</sub> distribution profile.

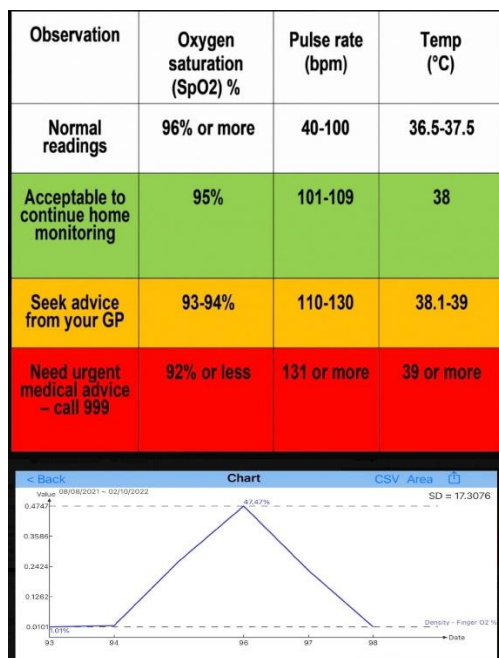


Figure 1: Table of ranges for SpO<sub>2</sub>%, pulse rate, and body temperature (upper diagram) and the SpO<sub>2</sub> distribution profile (lower diagram).

Figure 2 shows the comparisons between his SPO<sub>2</sub>% versus 6 other biomarkers: body weight, HbA1C, blood pressure, eAG, FPG, and PPG.

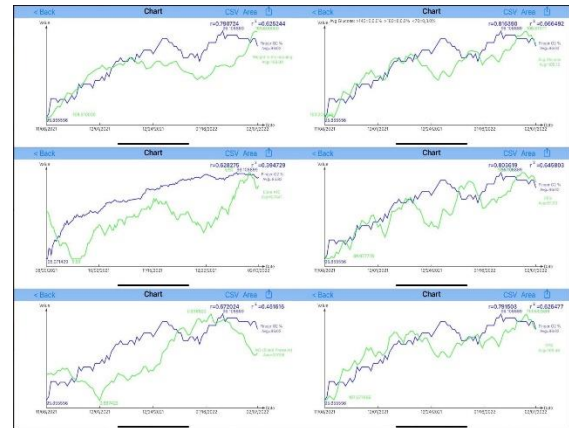


Figure 2: Comparisons between SPO<sub>2</sub>% versus 6 biomarkers, body weight, HbA1C, blood pressure, eAG, FPG, and PPG.

Figure 3 illustrates the comparisons between his SPO<sub>2</sub>% versus 3 other biomarkers: sleep hours, sleep score, and body temperature.

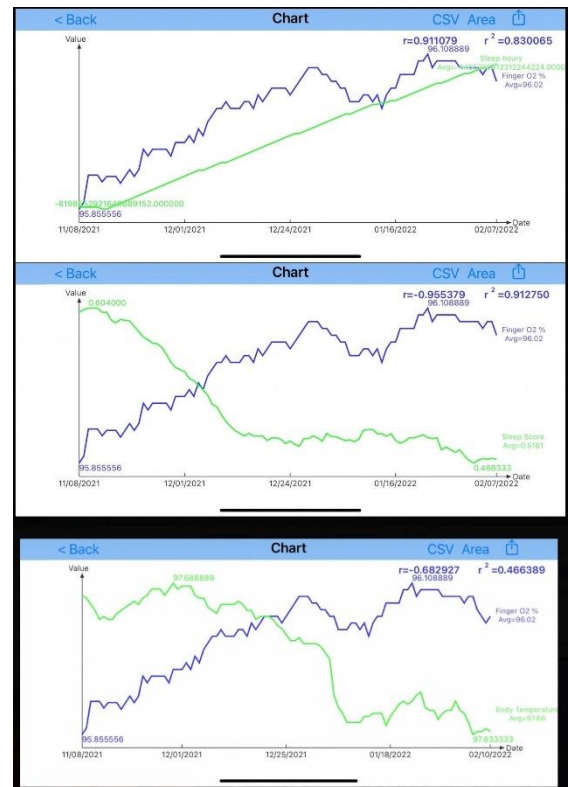
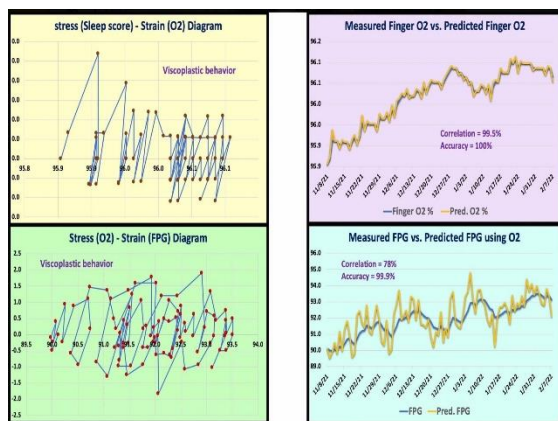


Figure 3: Comparisons between SPO<sub>2</sub>% versus 3 biomarkers, sleep hours, sleep score, and body temperature.

Figure 4 depicts the stress-strain diagram in a frequency-domain (FD) and comparison between measured biomarker versus predicted biomarker for two selected cases, SpO<sub>2</sub> and FPG.



**Figure 4:** Stress-strain diagram and comparison between measure biomarker versus predicted biomarker for two selected cases, SpO<sub>2</sub> and FPG.

#### 4. CONCLUSION

In summary, the following three observations outline the findings from this research work.

(1) His collected finger O<sub>2</sub>% data over the past 6+ months has a distribution profile described as follows: O<sub>2</sub> 96% level occupies 48% of total data while O<sub>2</sub> 94%-98% level occupies 99% of total data. In other words, his oximetry biomarker readings are healthy and normal.

(2) His finger O<sub>2</sub>% versus other biomarkers have the following nine high correlation coefficients (all within 63% to 91% or -68% to -96%):

- Weight = 79%
- HbA1C = 63%
- Blood pressure = 67%
- eAG = 82%
- FPG = 80%
- PPG = 79%

- Sleep hours = 91%
- Sleep scores = -96%
- Body temperature = -68%

(3) His correlation coefficients and prediction accuracies between measured dataset and predicted dataset are listed:

Finger O<sub>2</sub> using sleep score as input:  
Correlation = 99.5%, Accuracy = 100%

FPG using finger O<sub>2</sub> as input:  
Correlation = 78%, Accuracy = 99.9%

In conclusion, his finger O<sub>2</sub>% has high correlations (63%-91% or -68% - -96%) with other 9 selected biomarkers. When he compares his two predicted cases (O<sub>2</sub> from sleep score and FPG from O<sub>2</sub>), he has achieved high correlations (78% to 99.5%) and extremely high prediction accuracies (99.9% - 100%). Therefore, from the math-physical viewpoint, a preliminary conclusion can be drawn that the finger O<sub>2</sub>% is an important biomarker.

#### 5. REFERENCES

For editing purposes, the majority of the references in this paper, which are self-references, have been removed. Only references from other authors' published sources remain. The bibliography of the author's original self-references can be viewed at [www.eclaircmd.com](http://www.eclaircmd.com).

Readers may use this article as long as the work is properly cited, and their use is educational and not for profit, and the author's original work is not altered.